

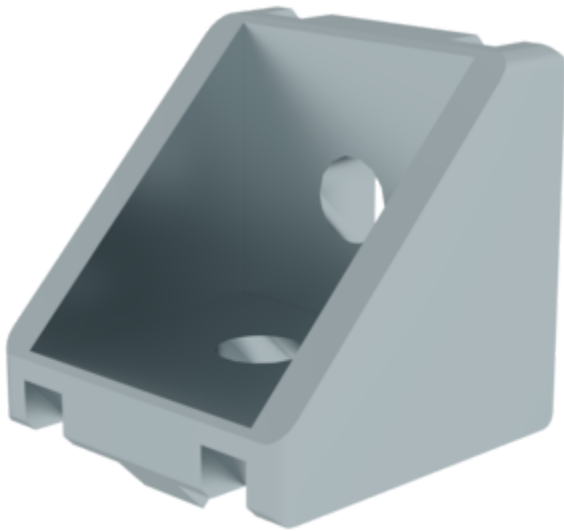
Order no.: 930207

## Corner bracket 30x30 mm

Type

30x30

40x40



### Specification

Connection type Angle connection	Material Die-cast	Weight/piece 23 g	Groove size 6 mm	Dimension A 30 mm
Dimension B 30 mm	Dimension C 30 mm	Dimension D 5 mm	Order no. 930207	

### Facts

- Profile angle for profile 30
- For joining profiles to each other
- Particularly suitable for retrofitting profiles

### Description

The 30x30 mm corner bracket is a profile angle that has been specially developed for profile 30. It is ideal for joining profiles to each other and is particularly suitable for retrofitting profiles. Thanks to its high-quality finish, the 30x30 mm corner bracket is particularly durable.

### Scope of supply

- Corner bracket: 1 x

### Information on sustainability criteria

- 
- Corporate certification: ISO 9001
  - Corporate certification: ISO 14001
  - Corporate certification: EN 1090
  - Corporate certification: EcoVadis
  - RoHS
  - REACH
  - The MUNK Group complies with a Code of Conduct
  - The Supply Chain Act does not apply due to our size
  - The materials used are listed in the technical specification
  - Resource-saving production: own photovoltaic systems
  - Energy-efficient consumption during production: LED lighting
  - Repairability, durability and quality: 15-year warranty on series products made in Germany
  - Recyclability: Our products are mostly made of aluminium, steel or wood and can be fed directly into the recycling process.
  - Socially acceptable working conditions in production: fair wages, gender equality
  - Economical and recyclable packaging: no use of polystyrene, predominantly use of wood and cardboard, small amounts of plastic
  - No health hazards for the users

More product pictures

---

## Corporate certifications

---

on sustainability criteria



Management System  
ISO 9001:2015  
ISO 14001:2015  
[www.tuv.com](http://www.tuv.com)  
ID 9108612548



**Nachhaltigkeit**  
**EcoVadis**  
sustainable supply management  
CSR-Rating in Silber 2022

