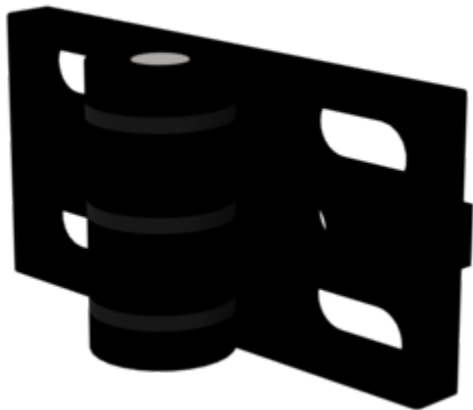


Order no.: 930609

# Hinge



## Specification

Material Zinc die-cast	Weight/piece 300 g	Dimension A 80 mm	Dimension B 40 mm	Dimension C 4.5 mm
Order no. 930609				

## Facts

- Black powder-coated hinge
- Bright axle
- Black discs
- Note: The hinges can be adjusted horizontally and can therefore be perfectly aligned

## Description

The hinge is an indispensable component for doors and windows. It joins two wings to each other and allows them to move. The hinges can be adjusted horizontally and can therefore be perfectly aligned. The hinge is made from die-cast zinc and has a black powder coating.

## Scope of supply

- Hinge: 1 x

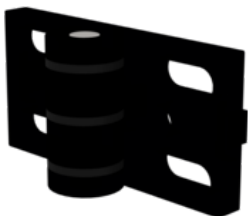
## Information on sustainability criteria

---

- Corporate certification: ISO 9001
- Corporate certification: ISO 14001
- Corporate certification: EN 1090
- Corporate certification: EcoVadis
- RoHS
- REACH
- The MUNK Group complies with a Code of Conduct
- The Supply Chain Act does not apply due to our size
- The materials used are listed in the technical specification
- Resource-saving production: own photovoltaic systems
- Energy-efficient consumption during production: LED lighting
- Repairability, durability and quality: 15-year warranty on series products made in Germany
- Recyclability: Our products are mostly made of aluminium, steel or wood and can be fed directly into the recycling process.
- Socially acceptable working conditions in production: fair wages, gender equality
- Economical and recyclable packaging: no use of polystyrene, predominantly use of wood and cardboard, small amounts of plastic
- No health hazards for the users

## More product pictures

---



# Corporate certifications

on sustainability criteria



Management  
System  
ISO 9001:2015  
ISO 14001:2015  
  
www.tuv.com  
ID 9108612548



**Nachhaltigkeit**

**EcoVadis**  
sustainable supply management

CSR-Rating in Silber 2022