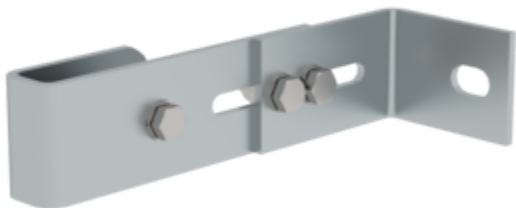


Order no.: 063250

Wall anchor, adjustable,
165–205 mm, galvanised
steel



Wall clearance min [mm]

- 165
- 215
- 275
- 375

Specification

Wall anchor Single	Wall distance min. 165 mm	Wall distance max. 205 mm	Adjustment range 40 mm	Material Galvanised steel
Transport dimensions 200 x 135 x 60 mm, 1.2 kg	Business division MUNK Günzburger Steigtechnik	Order no. 063250		

Facts

- Adjustment range enables flexible use
- Robust construction for secure hold
- A firm hold even during intensive use
- Adjustable wall anchor

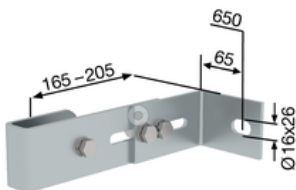
Scope of supply

- Wall anchor: 1 x

Information on sustainability criteria

- Corporate certification: ISO 9001
- Corporate certification: ISO 14001
- Corporate certification: EN 1090
- Corporate certification: EcoVadis
- RoHS
- REACH
- The MUNK Group complies with a Code of Conduct
- The Supply Chain Act does not apply due to our size
- The materials used are listed in the technical specification
- Resource-saving production: own photovoltaic systems
- Energy-efficient consumption during production: LED lighting
- Repairability, durability and quality: 15-year warranty on series products made in Germany
- Recyclability: Our products are mostly made of aluminium, steel or wood and can be fed directly into the recycling process.
- Socially acceptable working conditions in production: fair wages, gender equality
- Economical and recyclable packaging: no use of polystyrene, predominantly use of wood and cardboard, small amounts of plastic
- No health hazards for the users

More product pictures



Added value

Optimum planning

- Practical planning aids (available as [Downloads](#)) with tips for correct planning of vertical ladder systems
- Planning in close coordination with the client as well as the place and purpose of use
- Joint project planning



Corporate certifications

on sustainability criteria



Management
System
ISO 9001:2015
ISO 14001:2015

www.tuv.com
ID 9108612548



Nachhaltigkeit

EcoVadis
sustainable supply management

CSR-Rating in Silber 2022